

The Phoenix



This is the PHOENIX, published by and for the members of the Barony of Nordwache, Society for Creative Anachronisms, Inc. It is not an official publication of the Society for Creative Anachronisms, Inc. and does not delineate SCA policy.

Subscriptions are \$6 a year

Editors

Nikolai Sekol & Morganthe of the Shadows
(Tom & Faith Asdell)
1348 E San Bruno #A
Fresno, CA 93710
224-1816

Offices available immediately

Lists - Runs the lists at Tourneys

Chatelaine - Answers phone calls, maintains Baronial Arts Display, deals with PR,
Talks to interested parties at events.

Constable - Basically, takes care of security

Rieslingshire Herald - Help blazon & design devices, act as field and/or court
herald

Contact the lady Sarah Yarbrough (Dale) 297-0810 if you are interested in any of
the above offices.

Offices available April 14:

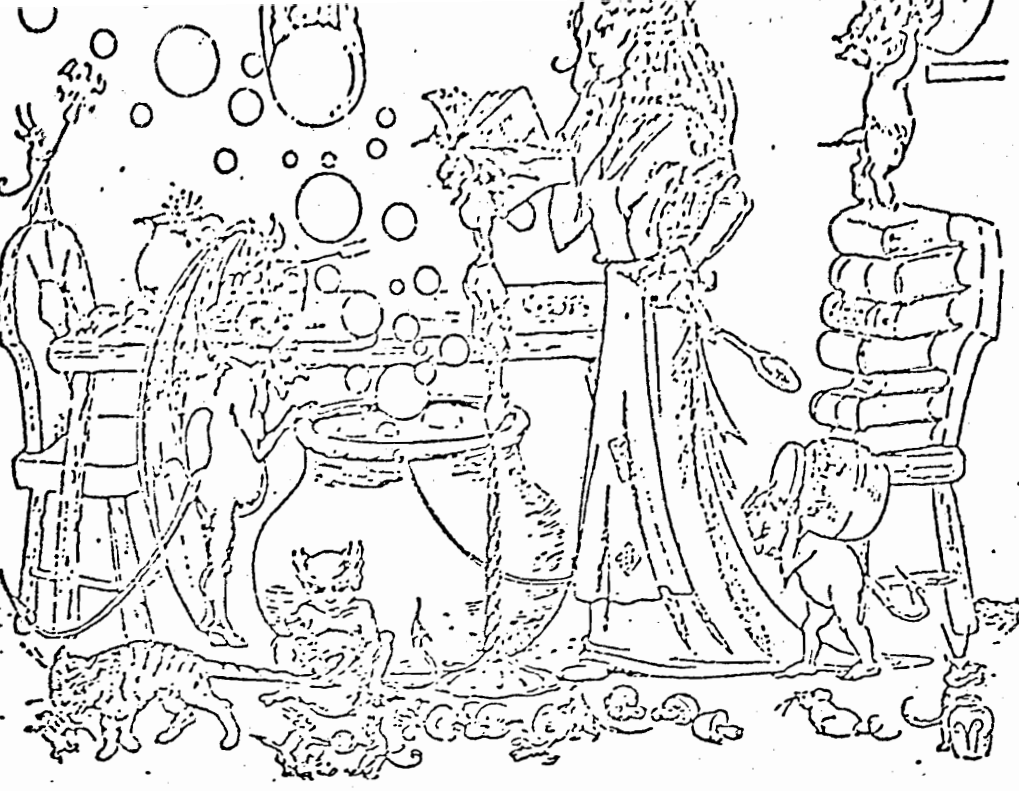
Baronial Marshal - Lord Nikolai Sekol 1348 E San Bruno #A, Fresno 93710 224-1816
Chronicler - Lady Morganthe of the Shadows 1348 E San Bruno #A, Fresno 93710 224-1816
Rieslingshire Seneschal - Lord Thom the Tanner 107 N San Pablo #A, Fresno 93701
441-1133
Baronial Herald - Lady Morgana Rhys 107 n San Pablo #A, Fresno 93701 441-1133

If you are interested in the offices above, contact the current officer.

Mistress Xena Baxter Wynthorpe, the new Kingdom Arts Officer, is now taking
submissions for the next issue of the Arts Quarterly. Those of you who have
seen the prototype issue know this publication has a great deal to offer,
in terms of entertainment and information. She is asking for drawings, articles,
poetry, stories, etc, etc, etc. (Sounds familiar doesn't it) If you are
interested in sharing your knowledge and/or talent with others, or if you just
want to see your stuff in a kingdom publication, here's an excellent opportunity.
Send submissions to: Mistress Xena Baxter Wynthorpe

c/o Joady Gorelick
8406 Flight Ave
Los Angeles, CA 90045
(213) 645-4326

Cover by - Lucia Elisabetta d'Antongualla
Rosebud directions from Lavender - Green Magic by Andre Norton
Funacy info - Lady Morgana Rhys



The
Wyr
Catcher
OR
N

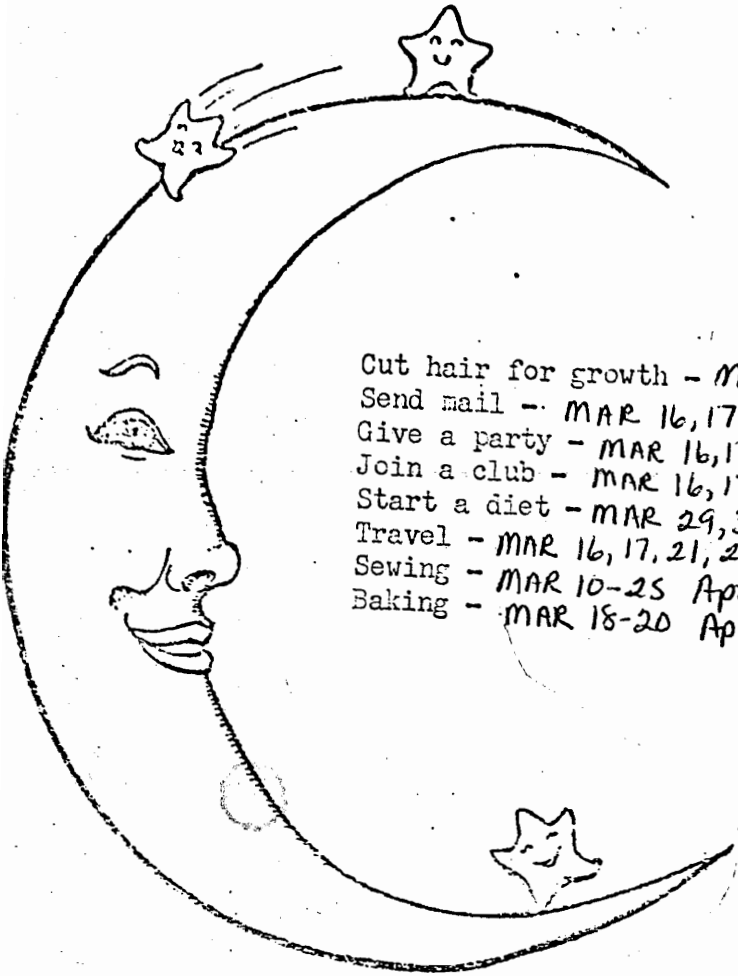
Fried Creme de Almondes

Take Almondes, and blanche hem, and wassh hem in faire water, and bray hem small in a mortar with faire water; And then take hem and pe water togidre soñ-what thik, and drawe hem porgh a streynour into a faire potte, And set hem ouer the fire, and lete hem boyle ones; And peñ take hem downe, and cast thereto Salte, and lete stonde a forlonge wey or .ij. And cast a litull vinegre perto; And peñ cast hit oñ a faire lynneñ cloth that is faire wassh, and pe water y-wronge oute there-of; and cast hit all abrode with the ladull, and lete meñ hold the cloth al abrode; and peñ take a ladill, and draw vndur pe cloth and draw away pe water all that a mañ may. And peñ gadur al pe creme togidur in pe clothe; And peñ take pe cloth with the creme, and hange hit vppoñ a pyñ, and lete pe water droppe oute two or thre houres or more; And theñ take hit of pe cloth, and putte hit in a boll of tre, And caste Sugur ynogh pereto and a litul salt. And if hit wex to thik, take swete wyne, and temper hit with ale; And peñ take reysons of coraunce, clene y-wassh, and put hem there-in, that pey be not seyñ; And whañ hit is dressed in maner of mortrewes, take rede anneys in confite, or elles levis of Borage, and set pere-oñ in a dissh.

Another recipe written forsoothly. Recipe from the book - A Fifteenth Century Cookery Book, by John & Anderson -

Illustration of Knight, see also from the cookyboke.

Lunacy



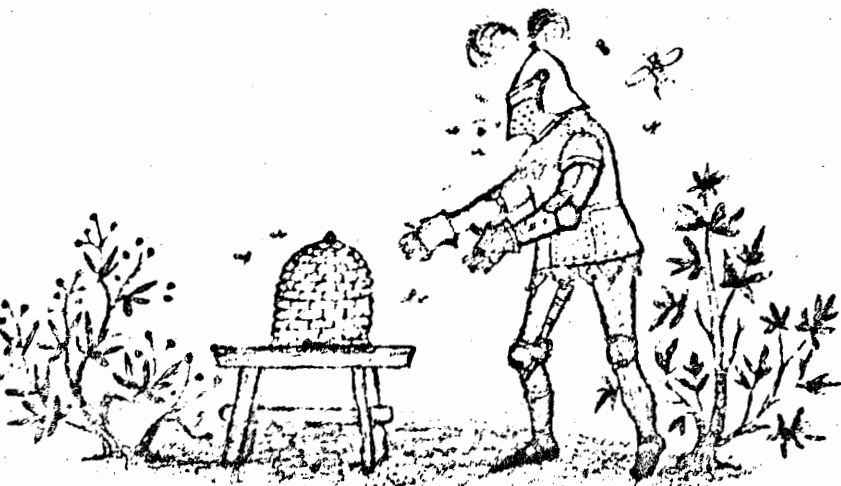
The following dates are not the only days to do the activities listed, but they are the days in the lunar cycle most likely to give favorable results.

- Cut hair for growth - MAR 18, 19, 20 - Apr 14, 15, 16
- Send mail - MAR 16, 17, 23, 24, 29, 30 - April 5, 6, 7, 12, 13
- Give a party - MAR 16, 17, 21, 22, 25, 26 - April 2, 3, 4
- Join a club - MAR 16, 17, 25, 26 - April 2-4, 12, 13
- Start a diet - MAR 29, 30 - April 2-4, 7, 8
- Travel - MAR 16, 17, 21, 22 - April 12, 13
- Sewing - MAR 10-25 Apr 9-23
- Baking - MAR 18-20 Apr 14-16

TRIVIA - Waning Moon - ☾ - the time from Full to NEW MOON WHEN THE Light of the moon decreases

NORRWACHE FAIBLES PART 2 →

Submitted by
KATRINA the Clumsy



IF THE SHOE FITS, WEAR IT

Do you attend the meetings
And mingle with the flock?

Or do you stay at home
To criticize and knock?

Do you take an active part
To help the work along?

Or are you satisfied
To only just belong?

When the business session comes
around,
Do you pretend to be sick?

Then leave the work to just a few
And talk about the clique?

Think this over, member,
You know right from wrong.

Are you an active member,
Or do you just belong?

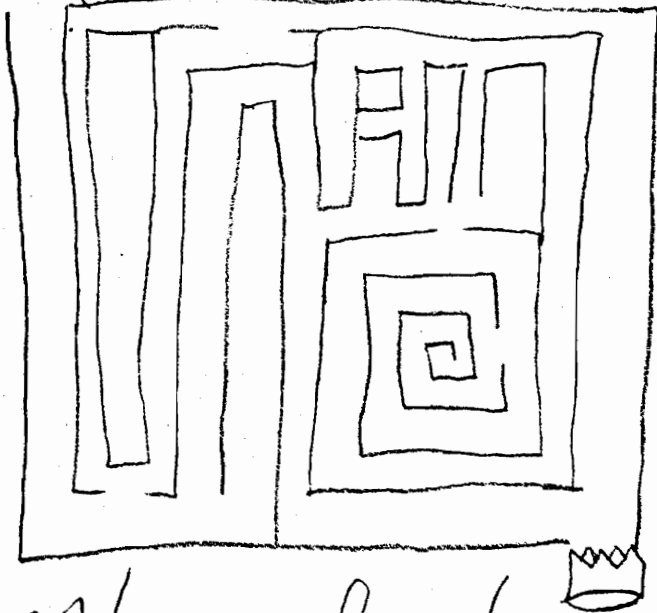
THE FLEDGLING

ROSE BEADS

DO YOU LIKE THE SMELL OF ROSES?
TRY MAKING A NECKLACE OF THESE BEADS.

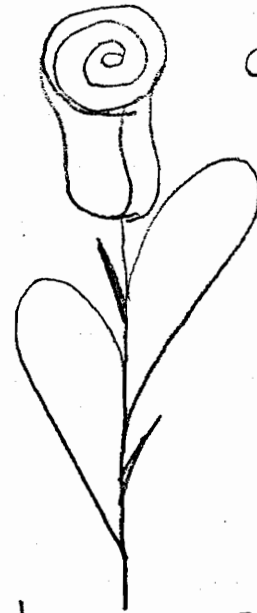
CHOOSE FULLY OPEN ROSES WITH A STRONG SCENT.
REMOVE PETALS ONLY AND PUT THESE IN A
STRONG CROKERY BOWL. CRUSH THE PETALS
INTO A PASTE. NOW ROLL THE PASTE INTO
BEADS. STRING YOUR BEADS AND LET THEM
DRY. NOW YOU HAVE A NECKLACE WITH A
ROSE SCENT.

HELP THE QUEEN
FIND HER CROWN.



Have fun!
Lady
Aerial

COLOR THE
ROSE.



CAN YOU GUESS THIS
RIDDLE?

WHAT DID THE WALL
SAY TO THE FLOOR?

I'VE GOT YOU CORNERED!



Johnny Be Fair

725



Oh, John-ny be fair, and John-ny be fine And wants me for to



wed And I would mar-ry John-ny, but my fa-ther up and



said I'm sad to tell you, dau-gh-ter what your mo-ther ne-ver



knew But John-ny is a son of mine and so he's kin to you.

BILLY BE FAIR, AND BILLY BE FINE, AND WANTS ME FOR TO WED,
AND I WOULD MARRY BILLY, BUT MY FATHER UP AND SAID,
I'M SAD TO TELL YOU DAUGHTER WHAT YOUR MOTHER NEVER KNEW,
BUT BILLY TOO IS A SON OF MINE AND SO HE'S KIN TO YOU.

CHARLEY BE FAIR, AND CHARLEY BE FINE, AND WANTS ME FOR TO WED,
AND I WOULD MARRY CHARLEY, BUT MY FATHER UP AND SAID,
I'M SAD TO TELL YOU DAUGHTER WHAT YOUR MOTHER NEVER KNEW,
BUT CHARLEY TOO IS A SON OF MINE AND SO HE'S KIN TO YOU.

YOU NEVER SAW A GIRL SO BAD AND SORRY AS I WAS,
THE BOYS IN TOWN ARE ALL ME KIN, AND ME FATHER IS THE CAUSE!
IF LIFE SHOULD THUS CONTINUE I SHALL DIE A SINGLE MISS,
AND SO I'LL GO TO MOTHER AND COMPLAIN TO HER OF THIS.

OH DAUGHTER, HAVEN'T I TAUGHT YOU TO FORGIVE AND TO FORGET?
AND IF YOUR FATHER BOWED HIS OATS, WELL STILL YOU NEEDN'T FRET,
YOUR FATHER MAY BE FATHER TO ALL THE BOYS IN TOWN BUT STILL,
HE'S NOT THE ONE WHO SIBED YOU, SO MARRY WHO YOU WILL!



CROWN
TOURNEY

APRIL 12 & 13

In the northernmost regions of Caid lies the Barony of Nordwache. Here in idyllic surroundings will the next King of Caid be chosen by right of arms.

Site: Fresno County Peace Officers Range

Fee : \$3 per person for the weekend
\$1.50 - 10 yrs and under

Camping will be allowed. There will be an additional \$4 per night per campsite. This is what we are being charged.

There are BBQs for cooking.

Hotels and restaurants are within a few miles. This is a wet site.

Site will open for set up Friday evening, after 5pm. (Parking may be a problem Friday as there will be another group using the range Friday evening) If you are going to set up Friday, we ask that you plan on being through by 11pm so as not to disturb people who are trying to sleep.

Friday	5-11pm	Set up
Saturday	7am	Set up
	9am	Lists open
	10am	Opening court
	-	½ hour after court combat begins
	7pm	Revel - this will be at the site - entertainers welcome

Sunday Meetings

If interest is there, a kingdom fighter practice after meetings.

5pm Site closes

Along with the Pentathlon Competitions:

- 1) Cooking a movable feast
- 2) Leatherwork
- 3) Brewing

there will be the following competitions:

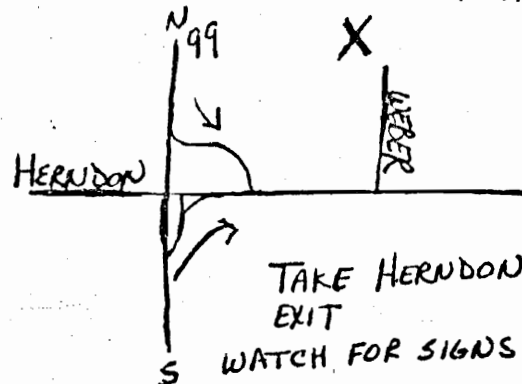
- Best Period Encampment
- Best Story - adult - Traveler's Tale
- smalls - their choice
- Best Favor
- On site drawing competition for smalls

If you have any questions contact the autocrats

Lady Morganthe (Faith Asdell)
(209) 224-1816

Mistress Eleanor of Alendan (Denise
Kawasaki) (209) 486-1479

Merchants welcome! \$10 space fee. For more information or to make reservations contact Lord Thom the Tanner (Tom Hooper) 107 N San Pablo #A, Fresno, CA 93701 (209) 441-1133



CORONATION

Spring Coronation and Queen's Champion Tourney (May 31 and June 1) will be held at Camp Radford in the San Bernadino Mountains (site of Altavia's Winter Weekend).

As the festivities will take place in a site somewhat removed from the modern day inns and taverns, overnight accommodations and victuals will be available. There are several overnight and meal plans so that each party may choose the one best suited to their needs. RESERVATIONS are required by May 10.

PARKING is limited. It is advisable to carpool as much as possible. The closest parking lot is reserved for cars carrying 4 or more people.

RESERVATION PLANS

- MEALS
1. Friday night dinner
 2. Midnight Snack
 3. Saturday Breakfast
 4. Saturday Lunch
 5. Banquet
 6. Sunday Breakfast
 7. Box Lunch at Queen's Champion

ACCOMMODATIONS - Rooms sleep 4-6 people. Please plan parties of that number. A Men and Womens dormitory facility is available for singles. Your room number will be sent to you with your Reservation Tickets.

RED TICKET - The red ticket plan is designed for travelers from far away who will be arriving at the site between 3pm and 6pm Friday, May 30 and will be staying though the weekend and leaving Sunday afternoon, June 1st. The plan includes two nights accommodations in a cabin or dormitory and meals 1-7. Cost is \$38 per person (children under 10 - \$26).

BLUE TICKET - The Blue Ticket plan is designed for those travelers who will be arriving later in the evening, Friday May 30th. It includes two nights accommodations and meals 2-7. The cost is \$35 per person (Children under 10 - \$22).

GREEN TICKET - This plan is for the traveler arriving Saturday morning and staying through the tourney the next day. It includes Saturday night accommodations and meals 4-7. The cost is \$23 per person (Children under 10 - \$15).

WHITE TICKET - This is a Day ticket for Saturday only. It does not include any overnight accommodations. This ticket does include the Day site fee and meals 4 and 5 (Saturday lunch and the evening Banquet). The cost is \$12 per person (Children under 10 - \$7).

Site fee for those not attending any meals or staying overnight - \$2.

NO FOOD IS ALLOWED IN THE ROOMS. EVERY EFFORT WILL BE MADE TO ACCOMMODATE SPECIAL DIETARY NEEDS. Send details when you send in your reservation.

Those attending only Queen's Champion on Sunday should bring a picnic lunch. Site fee \$2.

TENTATIVE SCHEDULE OF EVENTS

Friday 3pm - The earliest allowed arrival.
Friday 6pm - Dinner for those with Red Tickets. If you do not arrive in time for dinner this meal is forfeit.
Friday Night Snack - Light snack for late arrivals and workers. Remember: NO FOOD IN THE ROOMS.

Saturday 8am - 9am --Breakfast

Saturday 12:30-1:30 --Lunch

Saturday Evening -- Banquet and Revel.

Sunday 8am-9:30 --Breakfast

Sunday 10am - Opening Court Queen's Champion.
ALL ROOMS MUST BE CLEANED AND VACATED BY THIS TIME

Sunday 11:30 - Lists begin

Sunday Noon-1pm - Box Lunch

MERCHANTS - There is plenty of space for Merchants. Counter space in one of the camp stores is available to anyone with handcrafted wares to sell. Contact Duchess Neptha for details.

WHO TO CONTACT

For more information as it becomes available or any questions contact Duchess Neptha at 13862 Almetz, Sylmar, CA 91342 (818) 705-4328

For Reservations - Send a legal size SASE (no sase no ticket) to Michael Maggotlayer (c/o Michael Walsh) 10116 Jimenez St. Lake View Terrace, CA 91342.

Anyone wishing to assist in the many duties of the weekend - cooking, clean-up, Banquet servers, revel entertainment, etc. should contact Baron Sir Robear or Baroness Kristen 10171 Foothill Blvd., Lake View Terrace CA 91342 (818) 896-0471

RESERVATION FORM

Return this form or a copy with your reservation. Be sure to include a Legal Size SASE and Make checks out to THE KINGDOM OF CAID - S.C.A.

Check the plan you need and how many in your party.

\$38ea # _____ Red Tickets Total\$ _____

\$35ea # _____ Blue Tickets \$ _____

\$23ea # _____ Green Tickets \$ _____

\$12ea # _____ White Tickets \$ _____

CHILDRENS TICKETS - _____ \$ _____

TOTAL \$ _____

NAME _____

MUNDANE NAME _____

ADDRESS _____

Phone _____

YOUR TICKET AND INFORMATION PACKET WILL BE RETURNED TO YOU IN THE PROVIDED SASE (no sase, no return). Send reservation to Michael Walsh, 10116 Jimenez St., Lake View Terrace, CA 91342. RESERVATION DEADLINE - MAY 10TH, 1986.

March/April

Sun	Mon	Tues	Wed	Thurs	Fri	Sat
23 S.O.F.P. MCP	24	25 O	26	27	28	29 F.P.
30 EASTER	31 Bitch & Stitch BLACKWORK PART 2	APRIL 1 O	2	3	4	5 F.P.
6 S.O.F.P. MCP	7 BCM	8 O	9	10	11	12 CROWN
13 S.O.F.P. MCP	14	15	16	17 S.O. Bus. Meeting	18	19
20 S.O.F.P. MCP	21 Bitch & Stitch	22	23 O	24	25	26 REVEL
27	28	29 O	30 TYC	MAY 1	2	3

May
44
Myrune &
Bus Meeting

- BCM - BARONIAL COUNCIL MEETING - 7pm 1376 N College, FRESNO
- F.P. - FIGHTER PRACTICE - CAREY PARK (BEHIND FASHION FAIR) 9A.M.
- MCP - MYRUNE COURTLY PLAYERS - 582-3960 for info.
- Bitch & Stitch - 7p.m. 1376 N College, FRESNO 486-1499
- S.O. BUSINESS Mtg - CASTLE KIRK - CALL LADY OLWEN @ 798-1267
- S.O. FIGHTER PRACTICE - CASTLE KIRK - 11A.M. - 798-0740
- REVEL - 'CAN'T MAKE IT TO TYC REVEL' - Hosted by SARAH YARBROUGH
DETAILS NEXT ISSUE -