



The  
Phoenix  
January  
1986



This is the PHOENIX, published by and for the Barony of Nordwache of the Society of Creative Anachronisms, Inc. This is not an official publication of the Society of Creative Anachronisms, Inc. and does not delineate SCA policy.

Subscriptions are \$6 a year. Make checks payable to the editor. Submissions of artwork, stories, cartoons, songs, recipes, poems, articles etc are welcome.

#### Editors

Lord Nikolai Sekol & Lady Morganthe of the Shadows  
(Tom & Faith Asdell)  
1348 E San Bruno #A  
Fresno, Ca 93710  
(209) 224-1816

Am going to try something different. It does not seem to be in the cards that I get this thing out by the first, so I've decided to stop fighting it. Going to try running it from about the 15th to 15th. Am hoping this will allow it to get out 'on time' and it will give you something other than a bill in your mailbox toward the middle of the month. I would like some feedback on this, give it a chance, then let me know what you think.

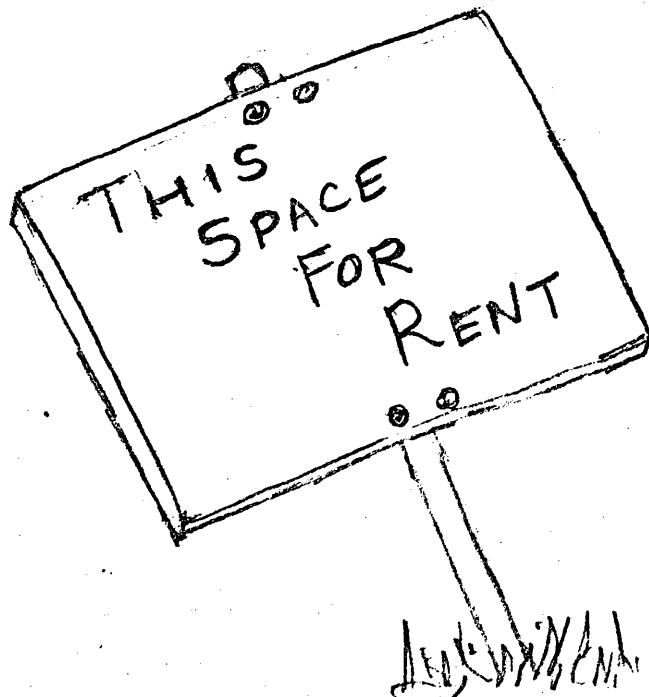
Cover art & costume illustrations by Lady Morgana.

Recipe from "How to Cook Forsoothly" available from Raymond's Quiet Press

Armorer's Guild will be meeting on the 21 of Jan. Now is the time for all you fighters and would be fighters to get your armor ready for tourney season. A reminder, the Protectorate Tourney will be March 22 and Crown Tourney will be here in Nordwache on April 12.

The new KNOWN WORLD HANDBOOK is available. Price is \$8. We are trying to get a group order ready so the price will be a little cheaper. If you interested in ordering a copy let me know @ 224-1816. The KWH is an excellent source of basic information concerning the SCA, and is highly recommended for everyone. Even if you have the old one, the new one is worth the investment, it has completely been redone.

Advertise your products or skills in the PHOENIX. The PHOENIX is mailed to many parts of the kingdom each month. If you are interested, call the editors listed above.



YOUR CHANCE TO SPEAK OUT REGARDING THE  
FUTURE OF NORDWACHE.

# OPEN FORUM

JAN 25, 1986

VFW

12:30 p.m.

EVERYONE INVITED. PAID MEMBERS\* OF  
THE BARONY WILL BE INVITED TO EXPRESS  
THEIR OPINIONS - GOOD OR BAD.

WE HAVE SOME IDEAS FOR THE COMING  
YEAR THAT WE THINK ARE EXCITING & WANT  
TO SHARE THEM WITH YOU.

THIS IS COSTUME.

ANY QUESTIONS - CALL MORGANTHE  
@ 224-1816

\* MEMBERSHIP FORMS WILL BE AVAILABLE

DON'T MISS IT!



# The Witch's Cauldron

## Gynderbrede

- 1 1/3 cup honey
- 1 1/3 cup honey
- 3/4 cup brown sugar
- 4 tablespoons butter, melted
- 6 - 8 eggs
- 1 teaspoon baking powder
- 1 cup raisins
- 1/2 cup chopped almonds
- 1 teaspoon cinnamon
- 1 teaspoon nutmeg
- 1/4 teaspoon cloves
- 4 cups sifted flour

Beat the egg with the sugar, stir in the honey, add the butter. Sift the flour with the dry ingred. stir in, and add the nuts and raisins. Chill. Cut in desired shapes and bake until done at 350° or bake in a 9 x 13 pan for about 25 or 30 minutes. (The latter method makes a much better cookie.)

This is a recipe which has been considerably modified by modern methods. Rather than thickening with bread crumbs, flour and baking powder are added, and the mixture is baked. Raisins and almonds have also been added, both of which are in period, and the saffron and pepper have been left out, although you may add them if you wish, of course. This seems to be the distant ancestor of such modern German cookies as Lebkuchen and Pfeffernusse.

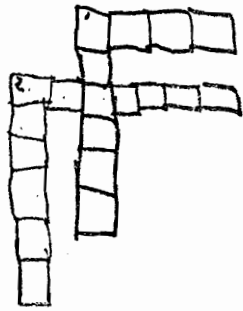
HELP THE QUEEN  
FIND HER CROWN



IS THE RUMOUR  
TRUE?

Yes, there will be a Charcoal Chick Child Care Service for the SMALLS of NORDWACHE. It will be 50¢ a day or a ticket of 10 days for \$4.50.

A CROSS WORD

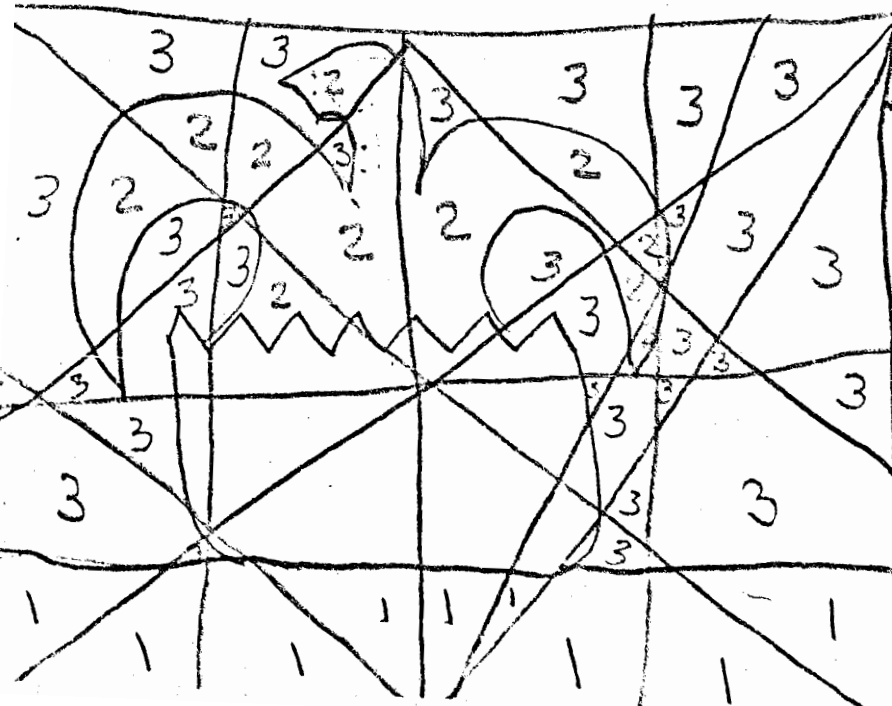
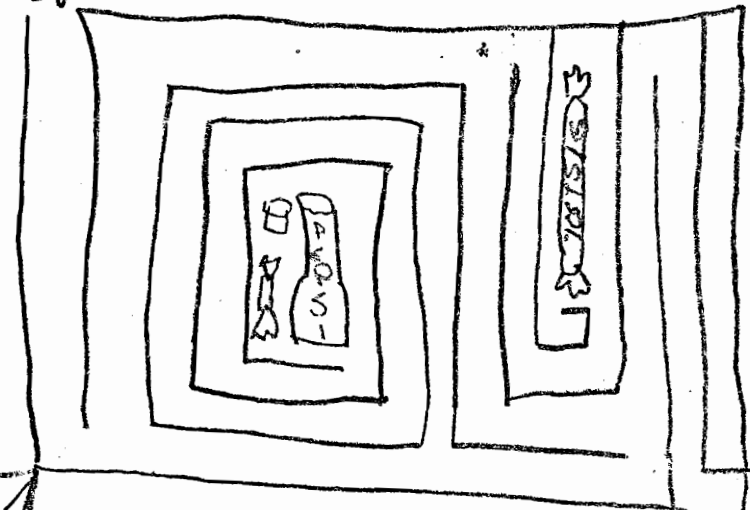


DOWN

ACROSS

- 1) Belted Fighter
- 2) One who fights
- 1) Ruler
- 2) Charm

FIND THE PATH TO  
NUTRITIOUS FOODS!



← COLOR BY NUMBER

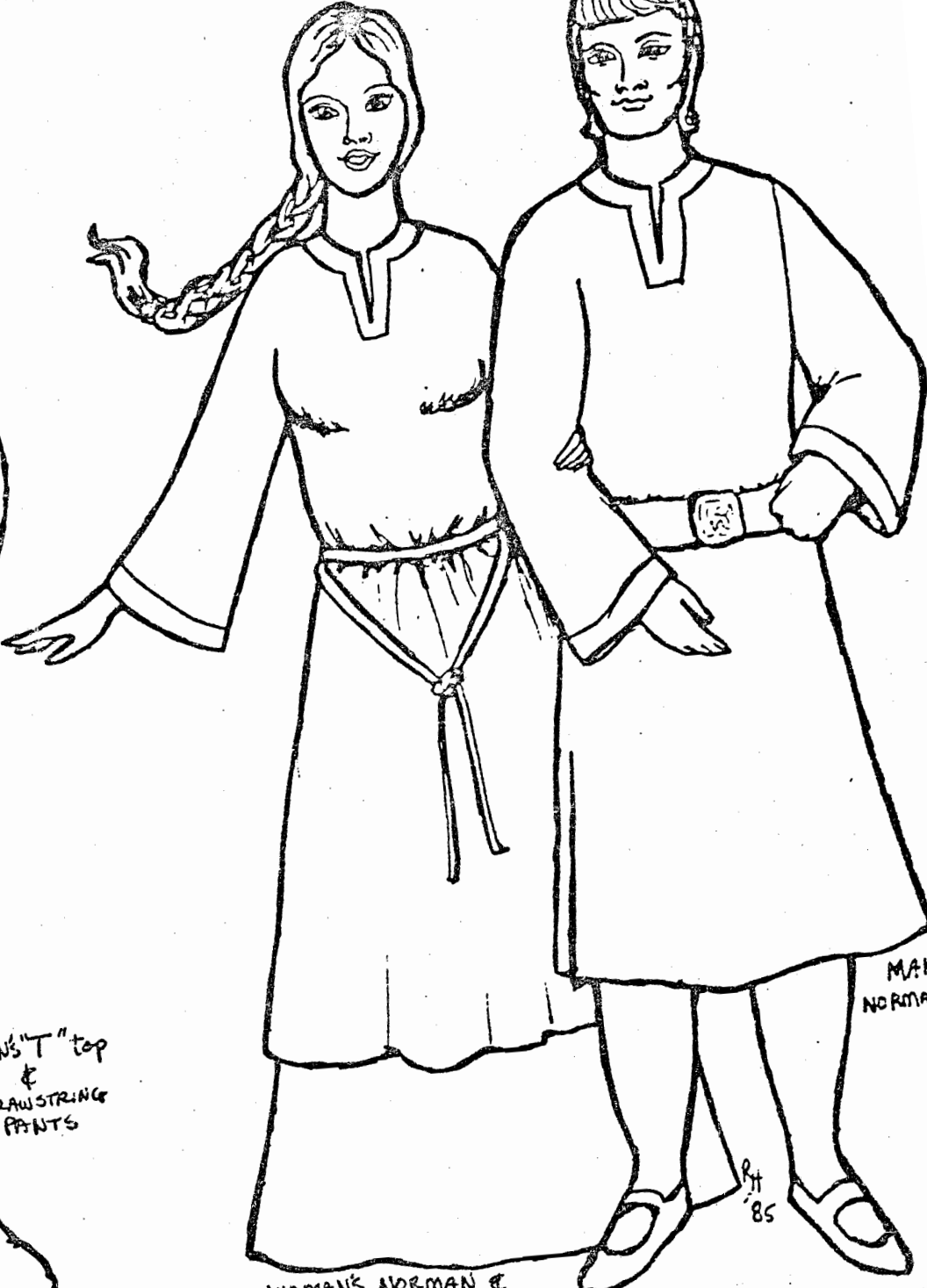
- 1 - GREEN
- 2 - BROWN
- 3 - BLUE

HAPPY  
NEW YEAR!



WOMAN'S "T" top, vest & 3yd skirt

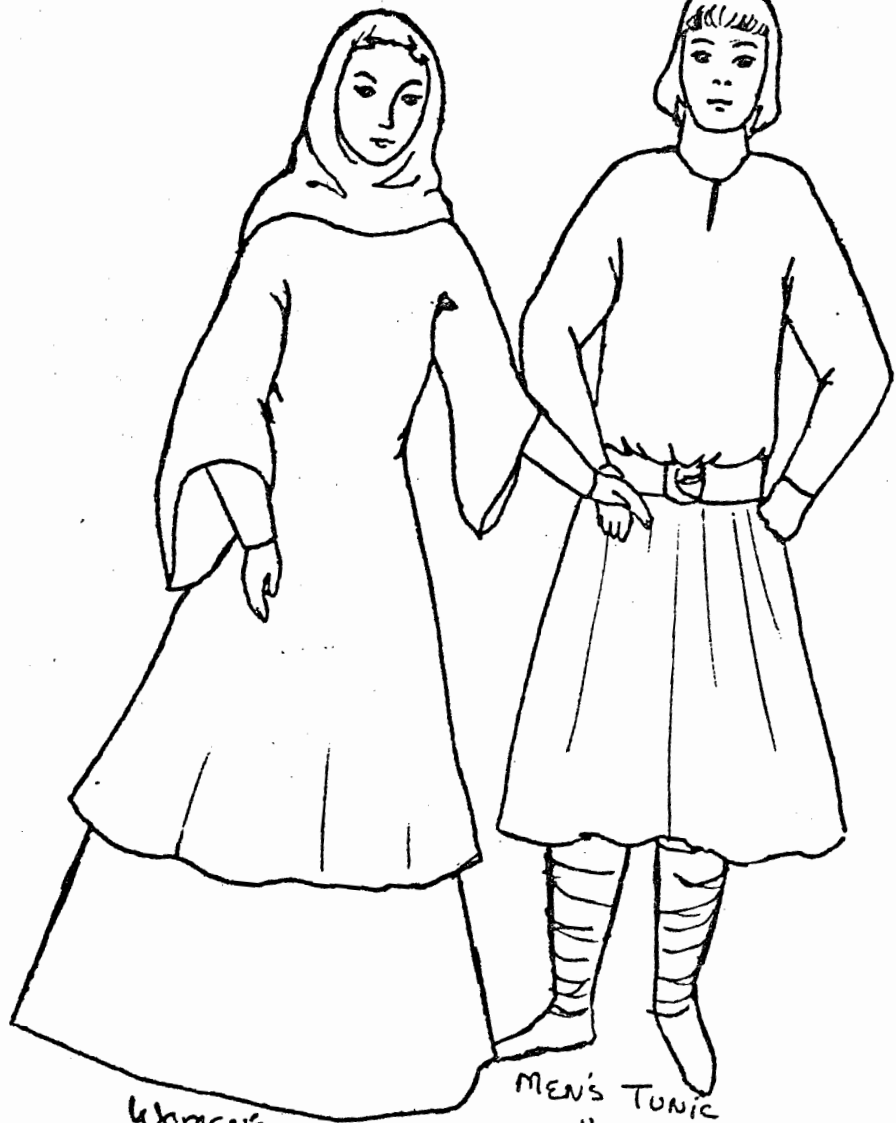
MAN'S "T" top & DRAWSTRING PANTS



WOMAN'S NORMAN & 3yd SKIRT

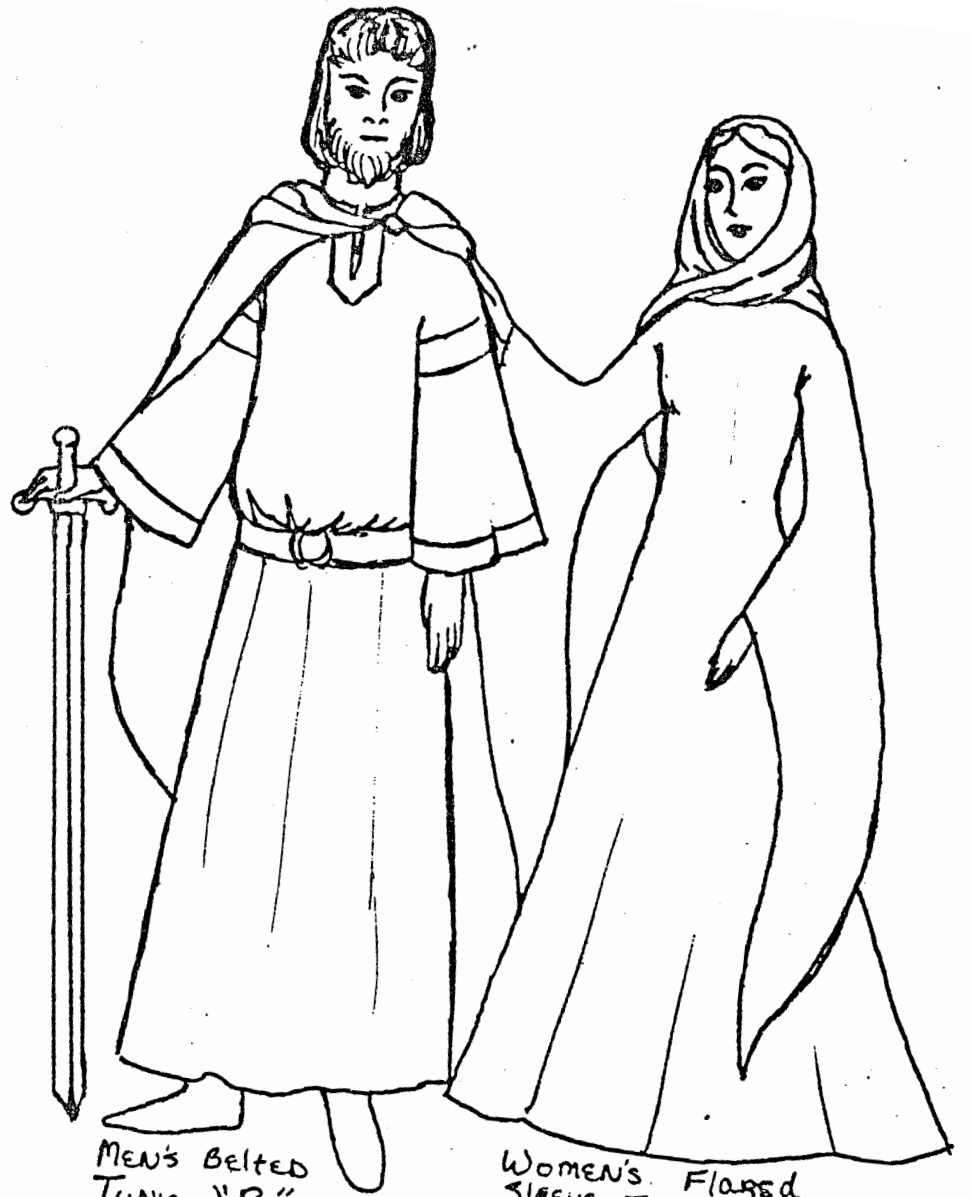
MAN'S NORMAN

8/11 85



WOMEN'S LAYERED  
TUNIC & VEIL

MEN'S TUNIC  
"A"

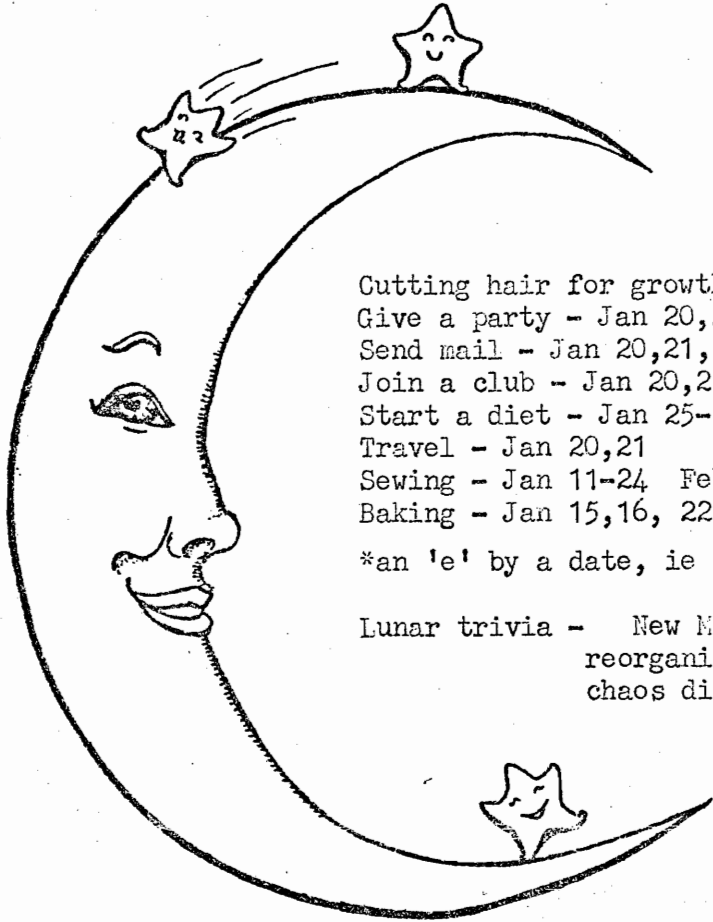


MEN'S BELTED  
TUNIC "B"

WOMEN'S FLARED  
SLEEVE TUNIC &  
VEIL

R/H  
85

# Lunacy



The following dates are not the only days to do the activities listed, but they are the days in the lunar cycle most likely to give favorable results.

Cutting hair for growth - Jan 22e-24 Feb 9,10  
Give a party - Jan 20,21,27,28 Feb 3,4,9,10  
Send mail - Jan 20,21,27,28 Feb - 3,4,9,10  
Join a club - Jan 20,21,25,26 Feb 7,8  
Start a diet - Jan 25-28 Feb 3,4,7,8  
Travel - Jan 20,21  
Sewing - Jan 11-24 Feb 8-23  
Baking - Jan 15,16, 22e-24 Feb 11e-13

\*an 'e' by a date, ie 22e, indicates moon enters phase in evening hours.

Lunar trivia - New Moon - symbolizes finalization, rest, hidden reorganization, incipient beginnings, or alternately, chaos disorganization, confusion, regret, stagnation, covert revenge.

Waxing moon - the time from New Moon to Full Moon as the moon becomes more visible each night.

Everyone is strongly urged to attend the Open Forum on the 25th. We really want to know what you think about how things are being done, ideas on what can be done to make Nordwache an even better barony etc.  
THIS IS AN IMPORTANT MEETING!!! PLEASE PLAN ON ATTENDING!!!!!!!!!!!!!!

Dancing guild will be starting up again soon, watch your calendar.

Please support your guilds! These are here for you. There will be a questionnaire regarding guilds at the meeting on the 25th. Everyone will be asked to fill one out, hopefully, this will enable us to tailor guilds to your wants and needs.

Clothiers Guild on the 15th will be concerned with basic costuming. If you want to learn how, or need a refresher attend this meeting. Patterns and instructions for costumes shown in this issue and more will be available at the meeting.

Bitch & Stitch (formerly known as Embroiderers' Guild) will be starting the year with the History of Needlework. This is an informative and interesting presentation. Please plan on attending. Watch your calendar, we'll be offering classes on many techniques (including needlepoint, shi sha mirrors, assissi etc) throughout the year.



# Jan / Feb

Sun	Mon	Tues	Wed	Thurs	Fri	Sat
JAN 12	13	<del>14</del> 14	Bowl 15 CLOTHIERS - BASIC COSTUMING	16	17	18 F.P.
19	20	Bowl 21	Bowl 22	23	24	25 F.P. OPEN FORUM
M.C.P. Recorder	BITCH'S STITCH Knitting B, Needlework	ARMORERS				
26	27	Bowl 28	Bowl 29	30	31	FEB 1 F.P.
mcp Recorder						
2	3	Bowl Dances 4	Bowl Dance 5 4:00	PWP Dance Lessons 6	7	8 F.P. 11am
mcp Recorder	B.C.M.	ARMORERS				
9	10	Bowl 11	Bowl 12	PWP Dance Lessons 13	14	15 F.P. VALENTINE REVEL
mcp Recorder			CLOTHIERS			
16	17	Bowl 18	Bowl 19	PWP Dance Lessons 20	21	22 F.P. House Warming Party at Fuller's
MCP Recorder	BITCH'S STITCH	ARMORERS				

B.C.M. Baronsal Council Mtg. - 1376 N College, Fresno - 7p.m.

Clothiers - 7p.m. 5857 E Saginaw

F.P. Fighter Practice 9a.m. Carey Park (behind Fashion Fair)  
224-1816 for info

Recorder - 7p.m. 1348 E San Bruno #A, Fresno - 224-1816

MCP - Mifune County Playes - 582-3960 for info

Bitch's Stitch - 7p.m. 1376 N College, Fresno 486-1479

Armors - 1376 N College, Fresno 7p.m. 224-1816 for info

Open Forum - details inside

Valentine Revel - 7p.m. VFW Hall.